

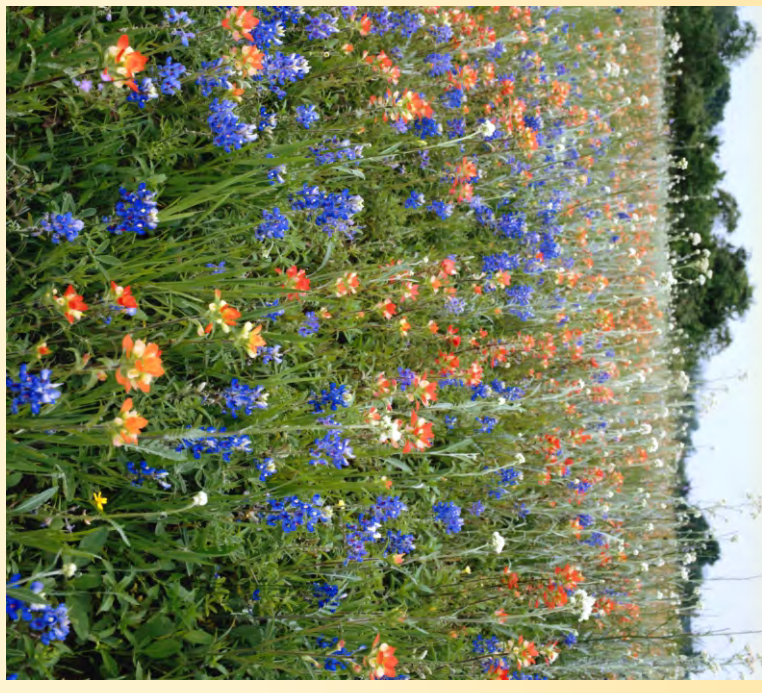


DeWitt County TEXAS

One can view wildflowers throughout the year. However, the most beautiful varieties bloom in the spring of each year. DeWitt County has over 1,000 different species that have been documented blooming at various times throughout the county, which is the reason that DeWitt County is named the "Wildflower Capital of Texas," as designated by the Texas Legislature in 1999. Tour the county lanes and byways and experience nature's beauty at its best.

The peak wildflower viewing period is hard to predict because so much is dependent on the weather. Some years we see wildflowers pop out in mid March and begin to peak in early April. The official celebration of Wildflower Month in DeWitt County is celebrated in April.

Be sure to stop by the Cuero Chamber of Commerce, Agriculture & Visitor Bureau, at 210 E. Main St, to pick up a brochure to identify the flowers you see. Driving maps of scenic areas are also available.



361-564-2661

City of
Nordheim

361-938-5223



361-485-8008

Yoakum
Area Chamber of Commerce

361-293-2309

www.cuero.org
210 E. Main St | Cuero, TX 77954
361.275.2112

CUERO

f StaycationInSouthCentralTexas

to create family memories you'll cherish for a lifetime.

and Websites, and take a journey into South Texas history on our Chamber, Museum, Downtown Facebook pages us on our Chamber, Museum, Downtown Facebook pages and Websites, and take a journey into South Texas history to create family memories you'll cherish for a lifetime.

Stay-ca-tion

Noun—a vacation spent at home involving trips to local attractions.



MAP ROUTES

Concrete Edgar Route

Exit Cuero via US 77A. After the overpass, veer to the left on US 183N. Continue left on 183N for approximately 9 miles to the Concrete-Edgar Road sign and turn right. At the sharp right turn continue on paved road. Take the first left and continue to the intersection at US 77A. Turn right to return to Cuero. This route is approximately 20 miles.

Yorktown Route

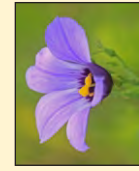
Concentration of flowers in the western part of the county varies from year to year so check with the Chamber for current status. This route is approximately 17 miles. The TX 72 river bridge is currently out; please follow detour signs.

Stratton Route

Exit Cuero via FM 1447 and continue until you reach the Primitive Baptist Church. Turn around and return to Cuero. This is a busy road so drive carefully. This route is approximately 20 miles.

Amekeville/Meyersville Route

If you like old rustic churches, then this is the route for you. Take FM 236 south out of Cuero and after 7 miles, turn right on the Zion Cemetery Road to Zion Evangelical Lutheran Church. Take time to go in and see the church and the cemetery. When you get to FM 236, turn right. Watch for the FM 3157 sign to Meyersville; a sharp turn to the right. While in Meyersville, visit the St. Peter and Paul's Catholic Church on FM 237, St. John's Evangelical Lutheran Church, the Old Stone Church (audio history) and cemetery, plus Egg's Store and Museum. To depart this route, FM 3157 becomes Meyersville Road. Go west to US 1835 and turn right. This is the Goliad Hwy and you are headed back to Cuero. Go past the TxDOT gravel storage and on the right you will see the Antioch Baptist Church. Services are still held there. After that you will come to the Ratcliffe Road sign (FM 2718), turn left. After



TEXAS BLUEBELL

Blooms in late spring through the summer and is among the hardiest of Texas wildflowers. These two to three inch bell shaped flowers are a short-lived perennial that reseeds itself.



CELESTIAL

Blooms March through May; it usually opens its purple and blue petals after 9:00am and closes up by 3:00pm. Each flower lasts only one day. While it doesn't last long, this blue Texas wildflower is a little gem when found.



TEXAS LANTANA

Blooms nearly year-round in South Texas, April to October in Central and East Texas, somewhat earlier in the Trans-Pecos. A distinctive pungent odor comes from the leaves. Blooms are tight clusters of yellow, orange, and red flowers.



PRICKLY PEAR CACTUS

Blooms in shades from yellow to red across the state. Perennial. The fruit, or tuna, which ranges from red to deep maroon when ripe, makes a great jelly.



WINECUP

Blooms early in summer, in most parts of the state, except the west. Grows in sandy soils in open woods and scrublands. Mostly single flowers, on plants about six to eight inches high. A tall (two to three feet), branched variety bears many blossoms on one plant.



MEXICAN HAT

Blooms May to July, later with favorable weather. Common throughout most of state. Named for its resemblance to the traditional high-crowned, broad-brimmed Mexican sombrero.



PINK EVENING PRIMROSE

Blooms April to June across much of the state. Opens at dusk in northern portions of Texas; flowers wither each day, replaced by new blossoms each evening. Elsewhere in the state, blossoms stay open all day. Drought-tolerant. Also known as buttercup.



INDIAN BLANKET

Blooms April to June across much of the state. When viewed in a mass, the brilliant combination of red, orange, and yellow resembles brightly woven fabric. Also called fireweed.



INDIAN PAINTBRUSH

Blooms early spring throughout the state. Several species with various colors range from scarlet to orange, cream, yellow, and occasionally purple. The bright tips of the petal-like bracts look like they've been dipped in paint. The genus name honors Spanish botanist Domingo Castillejo.



BLIEBOUQUET

species of bluebonnet that grow in Texas have been given the name Bliebouquet by the Texas Legislature. A member of the large lupine genus.

COMMON TEXAS WILDFLOWERS

5.5 miles the Rabke Methodist Church will be on the left. This church was established in 1894 and services are held there occasionally.

Westhoff

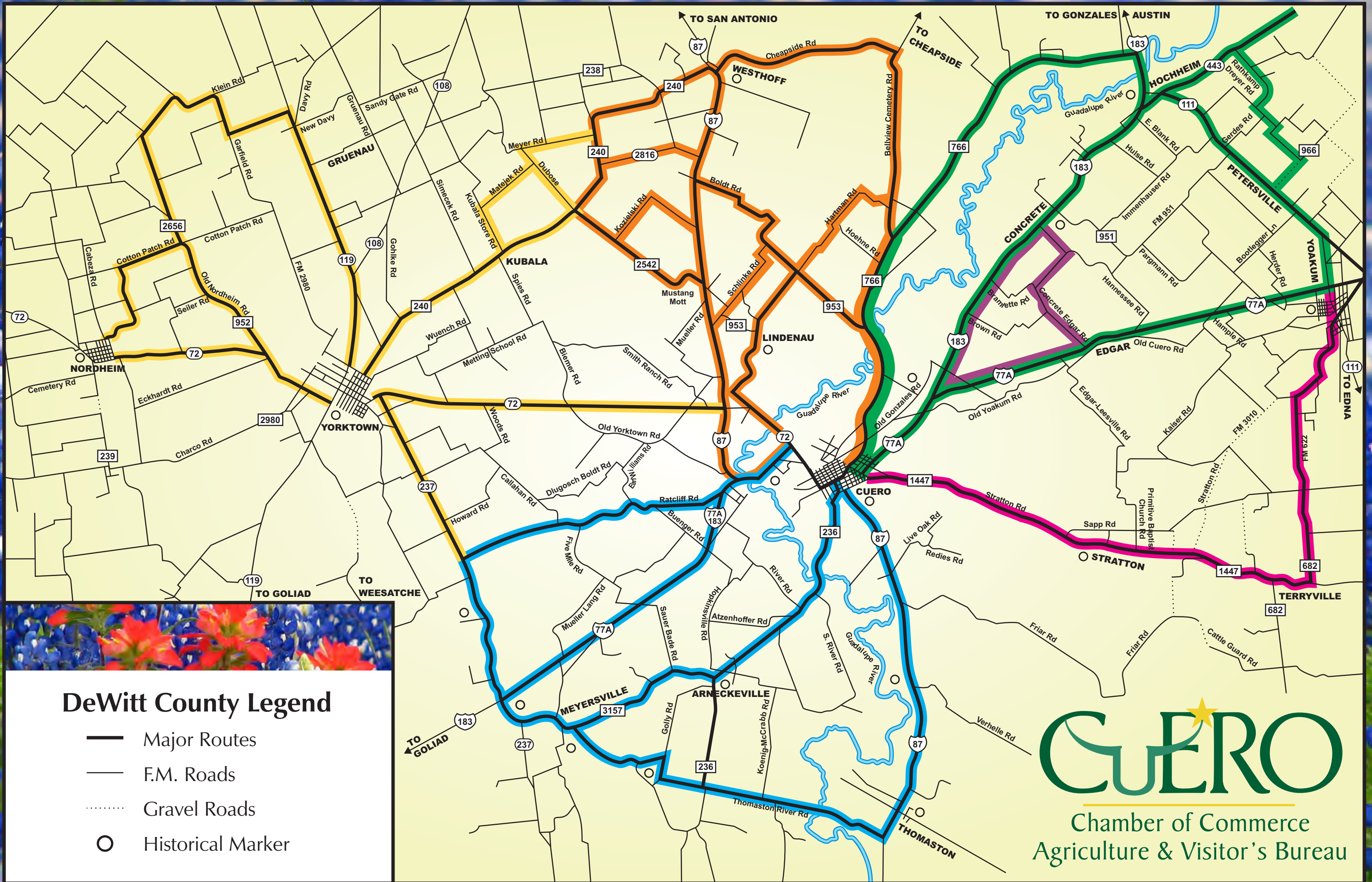
Exit Cuero northwest via FM 766. Turn left toward Cheapside on Bellevue Cemetery Road. After passing the cemetery, take the first left exit to Westhoff. At Westhoff, cross US 87 and follow FM 240 going south toward Yorktown. At FM 2542, turn left. At Mustang Mott, turn right onto US 87 and return to Cuero. This drive is approximately 40 miles. For a shortened version, turn left onto US 87 at Westhoff instead of crossing it.

Lindenau Route





Exit Cuero via TX 72 West (Old San Antonio Hwy/Heaton). The TX 72 river bridge is out; follow the detour to Old San Antonio Road. The first road after the old underpass is Lindenau Road. Turn right at the dance hall, and then turn right onto FM 953. At the Boldt Road sign, turn left. Take Hartman Road where Boldt Road intersects it. It will take you to Bellevue Cemetery Road and then turn right. Turn right again at FM 766, it will bring you back to Cuero. There is so much to see in the Lindenau area, such as old town buildings and St. John's Lutheran Church on Schlinke Road.

Dreyer Route

Follow FM 766 which will bring you back to US 183. Turn right and drive several miles south to the big intersection and turn left at TX 111. Then after a short drive, turn left again at FM 443 to Dreyer Road. Follow FM 443 to Rathkamp Dreyer Road and turn right. At the Sons of Hermann Cemetery, follow the Rathkamp Dreyer Road to the left. Turn right on FM 996 when you reach the T and follow it to Petersville; then turn left on TX 111 to Yoakum. At the 4-way stop signs, turn right onto US 77A and return to Cuero. This route is approximately 50 miles. It can be shortened by turning right on TX 111 in Petersville; then turn left on US 1835 to return to Cuero.



DeWitt County Legend

-  Major Routes
-  F.M. Roads
-  Gravel Roads
-  Historical Marker

CUERO
 Chamber of Commerce
 Agriculture & Visitor's Bureau